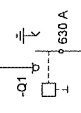


=J01  
+J01  
=JZ01



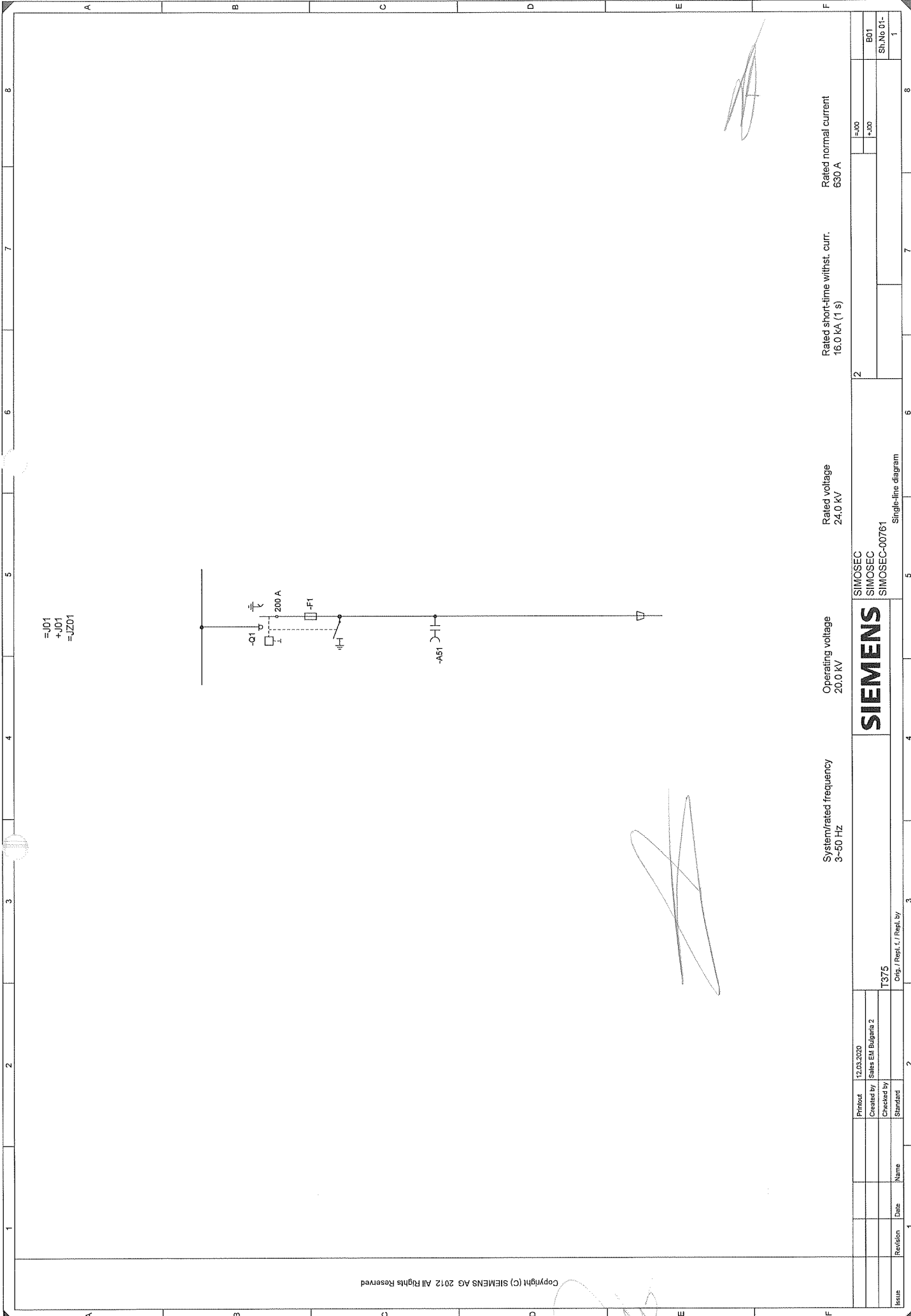
-AS1

System/rated frequency 3-50 Hz    Operating voltage 20.0 kV    Rated voltage 24.0 kV    Rated short-time withst. curr. 16.0 kA (1 s)    Rated normal current 630 A

Printed 12.03.2020		Created by Sales EM Bulgaria 2		R375		Orig./ Repl. f./ Repl. by	
Issue	Revision	Date	Name	Checked by	Standard		
	1						
<b>SIEMENS</b>				SIMOSEC		Single-line diagram	
				SIMOSEC		SIMOSEC-00760	
				1		8	
				BD1		1	
				Sh.No 01-		1	







=J01  
+J01  
=JZ01

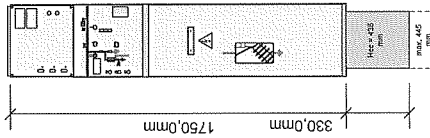
Copyright (C) SIEMENS AG 2012 All Rights Reserved

System/rated frequency 3~50 Hz      Operating voltage 20.0 kV      Rated voltage 24.0 kV      Rated short-time withst. curr. 16.0 kA (1 s)      Rated normal current 630 A

Printout		12.03.2020		SIEMENS		SIMOSEC		2		=J00		B01	
Created by		Sales EM Bulgaria 2		SIEMENS		SIMOSEC		2		+J00		Sh.No 01-	
Checked by		T375		SIEMENS		SIMOSEC-00761		2				1	
Standart		Clp. / Repl. f. / Repl. by		Single-line diagram									
Issue	Revision	Date	Name										

**FRONT VIEW**

=J01  
+J01  
=JZ01



XX

LOAD DATA AND MINIMUM DISTANCES	
1. PERMANENT LOADS	
VERTICAL SINGLE LOAD $G_v$	
PANEL WIDTH:	
375 mm	2.0 kN
500 mm	4.5 kN
525 mm	4.5 kN
875 mm	5.0 kN
1000 mm	5.0 kN
2. NON PERMANENT LOADS	
LIVE LOAD $q_v$	6 kN/m <sup>2</sup>
3. MINIMUM DISTANCES	
MINIMUM DISTANCE TO CABLE	1000 mm (1)
WALL DISTANCE ON THE LEFT	100 mm (2)
WALL DISTANCE ON THE RIGHT	100 mm (2)
WALL DISTANCE FOR PANEL TYPE "CC"	600 mm (2)
WALL DISTANCE REAR	800 mm (2)
*3 WALL DISTANCE REAR (with rear dust)	≥ 35 mm
4. CEILING HEIGHT	≥ 2400 mm

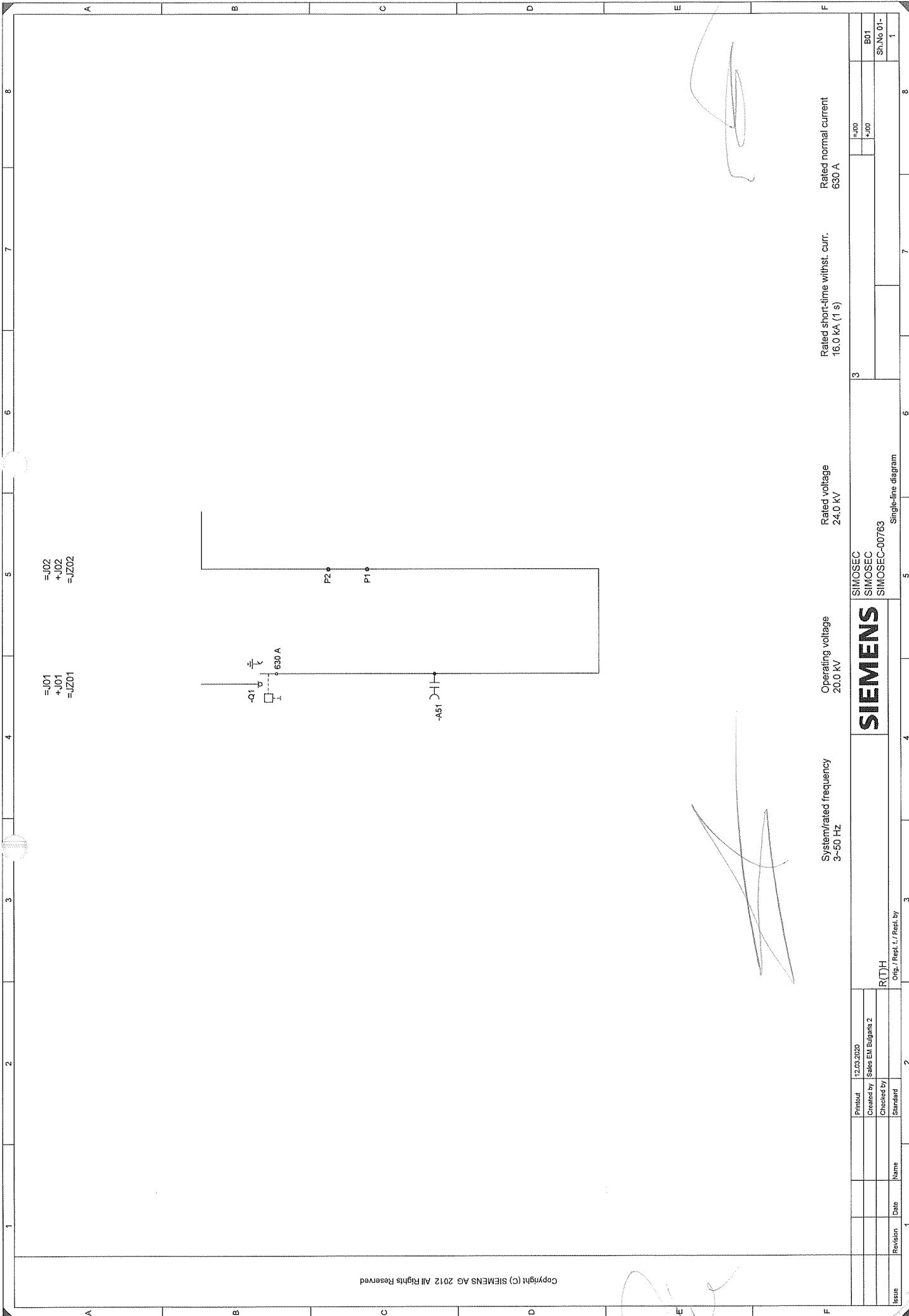
- Control aisle:
- \*1) Depending on national requirements; for extension/panel replacement, a control aisle is recommended of at least:
    - For free-standing arrangement: 1000 mm
    - For wall-standing arrangement: 100 mm
  - \*2) For wall-standing arrangement a lateral wall distance (left or right) is recommended of at least:
    - For free-standing arrangement: 100 mm
    - For wall-standing or free-standing arrangement with panel type "CC" at end of the switchgear (arranged on the left or right side): 600 mm
  - \*3) Position of cable fixing (cable bracket), underneath the panel, in the cable basement:
    - max. 500 mm (445+60)
    - max. 600 mm
  - \*3) \*4) For installation "on site" (Delivery in by-pack kit):
    - Hoc = Additional available length for installation below the panel
    - For switchgear design with IAC 21 kA, the height of the switchgear will be at least: 2100 mm

5. MINIMUM DOOR OPENINGS:  
Switchgear height: 1750 mm  
switchgear without low-voltage compartment, without front covers  
HEIGHT: 2000 mm  
1000 / 1250 / 1500 mm  
Switchgear height: 2100 mm:  
switchgear with low-voltage compartment: 350 mm  
HEIGHT: 2200 mm  
1000 / 1250 / 1500 mm  
WIDTH: 2400 mm  
switchgear height: 2300 mm:  
switchgear with low-voltage compartment: 550 mm:  
HEIGHT: 2400 mm  
1000 / 1250 / 1500 mm  
WIDTH: 2400 mm  
6. Depth of cable basement  
(depends on design of delivery switchgear)  
\*3) \*4)  
Please note: Bending radius of cable  
XX Level of installation (altitude)

Note for installation: Acc. to delivery version of transport units, TU groups (TU's or panels) will be assembled on site

Rated voltage	24.0 kV	Rated short-time withst. curr.	16.0 kA (1 s)	Rated normal current	630 A
Operating voltage	20.0 kV	System/rated frequency	3-50 Hz		
<b>SIEMENS</b>					
SIMOSEC SIMOSEC SIMOSEC-00761					
Arrangement diagram					
Sh.No 01-	1				
Sh.No 01-	2				
Sh.No 01-	3				
Sh.No 01-	4				
Sh.No 01-	5				
Sh.No 01-	6				
Sh.No 01-	7				
Sh.No 01-	8				





=J01  
+J01  
=JZ01

=J02  
+J02  
=JZ02

Copyright (C) SIEMENS AG 2012 All Rights Reserved

Rated normal current  
630 A

Rated short-time withst. curr.  
16.0 kA (1 s)

Rated voltage  
24.0 kV

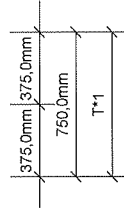
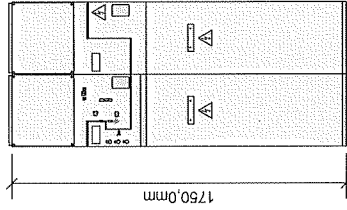
Operating voltage  
20.0 kV

System/rated frequency  
3-50 Hz

Printout		12.03.2020		SIEMENS		SIEMOSEC		SIEMOSEC-00763		Single-line diagram	
Created by		Sales EM Bulgaria 2		<b>SIEMENS</b>		SIEMOSEC		SIEMOSEC-00763		Rated normal current	
Checked by		Standard								=J00 +J00	
Revision		Date		Name		R(TH)		Orig. / Repl. f. / Repl. by		B01 Sh.No 01-	
1										3	
2										7	
3										8	
4										1	
5										1	
6										1	
7										1	
8										1	

**FRONT VIEW**

=J01  
=J02  
+J01  
+J02  
=JZ01  
=JZ02



**LOAD DATA AND MINIMUM DISTANCES**

<b>1. PERMANENT LOADS</b>	<b>5. MINIMUM DOORS OPENINGS:</b>
<b>VERTICAL SINGLE LOAD Gv</b>	Switchgear without low-voltage compartment, without front covers
PANEL WIDTH:	Switchgear height: 1250 mm:
375 mm	HEIGHT 2000 mm
500 mm	WIDTH 1000 / 1250 / 1500 mm
675 mm	Switchgear height: 2100 mm:
1000 mm	HEIGHT 2300 mm
<b>2. NON PERMANENT LOADS</b>	WIDTH 1000 / 1250 / 1500 mm
LINE LOAD $q_L$	Switchgear height: 2300 mm:
6 kN/m <sup>2</sup>	HEIGHT 2400 mm
<b>3. MINIMUM DISTANCES</b>	WIDTH 1000 / 1250 / 1500 mm
WALL DISTANCE ON THE LEFT	6. Depth of cable basement
WALL DISTANCE ON THE RIGHT	(depends on design of delivery switchgear)
WALL DISTANCE FOR PANEL TYPE "CC"	> 600 mm
WALL DISTANCE LEFT	> 1400 mm
WALL DISTANCE RIGHT	Please note: Bending radius of cable
"S" WALL DISTANCE REAR (with rear duct)	≥ 35 mm
4. CEILING HEIGHT	≥ 2400 mm
	Level of installation (altitude)

Control aisle:  
 \*1) Depending on national requirements, for extension/panel replacement, a control aisle is recommended of at least:  
 1000 mm  
 For wall-standing arrangement a control aisle  $\geq 1000$  mm  
 \*2) For wall-standing arrangement a lateral wall distance (left or right) is recommended of at least:  
 100 mm  
 For free-standing arrangement a lateral wall distance (left or right) is necessary of at least:  
 100 mm  
 For wall-standing or free-standing arrangement with panel type "CC" at end of the switchgear (arranged on the left or right side):  
 600 mm  
 \*3) Position of cable fitting (cable brackets), underneath the panel, in the cable basement:  
 max. 500 mm (445+60)  
 \*4) Deep floor cover, for cable basement, additionally extendible downwards at aisle  
 Position of cable fitting (cable brackets), underneath the panel, in the cable basement:  
 max. 600 mm  
 \*3) \*4) For installation "on site"  
 (Delivery in by-pack kit)  
 Hcc = Additional available length for installation below the panel  
 For switchgear design with IAC 21 kV, the height of the switchgear will be at least:  
 2100 mm

Note for installation: Acc. to delivery version of transport units, TU groups (TU's or panels) will be assembled on site

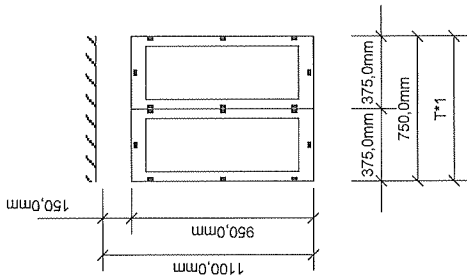
Rated voltage 24.0 kV  
 Operating voltage 20.0 kV  
 System/rated frequency 3-50 Hz  
 Rated short-time withst. curr. 16.0 kA (1 s)  
 Rated normal current 630 A

Issue	Revision	Date	Name	Standard	Checked by	Created by	Printed	12.03.2020	Sales EM Bulgaria 2
RTM								Orig. / Repl. I. / Repl. by	
SIEMENS								SIMOSEC	
SIMOSEC								SIMOSEC-00763	
Arrangement diagram								3	
Rated short-time withst. curr. 16.0 kA (1 s)								=100	
Rated normal current 630 A								+100	
Sh.No 01-								B01	
1								1	



**PLAN VIEW**

- =J01
- =J02
- +J01
- +J02
- =JZ01
- =JZ02



Copyright (C) SIEMENS AG 2012 All Rights Reserved

**LOAD DATA AND MINIMUM DISTANCES**

- PERMANENT LOADS**  
VERTICAL SINGLE LOAD  $G_k$   
PANEL WIDTH:  
375 mm  
475 mm  
575 mm  
1000 mm
- NON PERMANENT LOADS**  
LIVE LOAD  $G_k$   
8 kN/m<sup>2</sup>
- MINIMUM DISTANCES**  
CABLE  
WALL DISTANCE ON THE LEFT  
100 mm (\*)  
WALL DISTANCE ON THE RIGHT  
100 mm (\*)  
WALL DISTANCE FOR PANEL TYPE "CC"  
600 mm (\*)  
WALL DISTANCE REAR  
500 mm (\*)  
WALL DISTANCE REAR (with rear duct)  
≥ 35 mm  
\*) Level of installation (altitude)
- CEILING HEIGHT**  
≥ 2400 mm

- MINIMUM DOOR OPENINGS:**  
Switchgear height: 1750 mm  
HEIGHT  
2000 mm  
2300 mm  
Switchgear height: 2100 mm:  
HEIGHT  
2300 mm  
Switchgear height: 2300 mm:  
HEIGHT  
2300 mm  
Switchgear with low-voltage compartment 550 mm:  
HEIGHT  
1000 / 1250 / 1500 mm  
Switchgear with low-voltage compartment 650 mm:  
HEIGHT  
1000 / 1250 / 1500 mm  
Switchgear with low-voltage compartment 850 mm:  
HEIGHT  
1000 / 1250 / 1500 mm  
\*) For installation "on site"  
(Delivery in by-pacak kit)  
hcc = Additional available length for installation below the panel  
For switchgear design with IAC 21 kA: the height of the switchgear will be at least:
- Depth of cable basement  
(depends on design of delivery switchgear)  
\*) For installation "on site"  
(Delivery in by-pacak kit)  
hcc = Additional available length for installation below the panel  
Please note: Bending radius of cable  
≥ 35 mm  
\*) Level of installation (altitude)

**Control aisle:**

- \*1) Depending on national requirements; for extension/panel replacement, a control aisle is recommended of at least 1000 mm for switchgear, for control aisle: ≥ 1000 mm
- \*2) For walk-standing arrangement a lateral wall distance (left or right) is recommended of at least: 100 mm  
For walk-standing arrangement a lateral wall distance (left or right) is necessary of at least: 100 mm  
(changed on the left or right side)
- \*3) Position of cable fitting (cable bracket), underneath the panel, in the cable basement  
\*) Deep floor cover, for cable basement, additionally extendable downwards at site  
Position of cable fitting (cable bracket), underneath the panel, in the cable basement
- \*3) \*) For installation "on site"  
(Delivery in by-pacak kit)  
hcc = Additional available length for installation below the panel  
For switchgear design with IAC 21 kA: the height of the switchgear will be at least:

**FLOOR OPENING** (foundation opening) in mm:  
Width x Depth:  
Details see "W x D" by panel floor plan

Rated normal current  
630 A

Rated short-time withst. curr.  
16.0 kA (1 s)

Operating voltage  
20.0 kV

Rated voltage  
24.0 kV

System/rated frequency  
3-50 Hz

SIEMENS  
SIMOSEC  
SIMOSEC-00763

Rated normal current  
630 A

Rated short-time withst. curr.  
16.0 kA (1 s)

Operating voltage  
20.0 kV

Rated voltage  
24.0 kV

System/rated frequency  
3-50 Hz

SIEMENS  
SIMOSEC  
SIMOSEC-00763

Rated normal current  
630 A

Rated short-time withst. curr.  
16.0 kA (1 s)

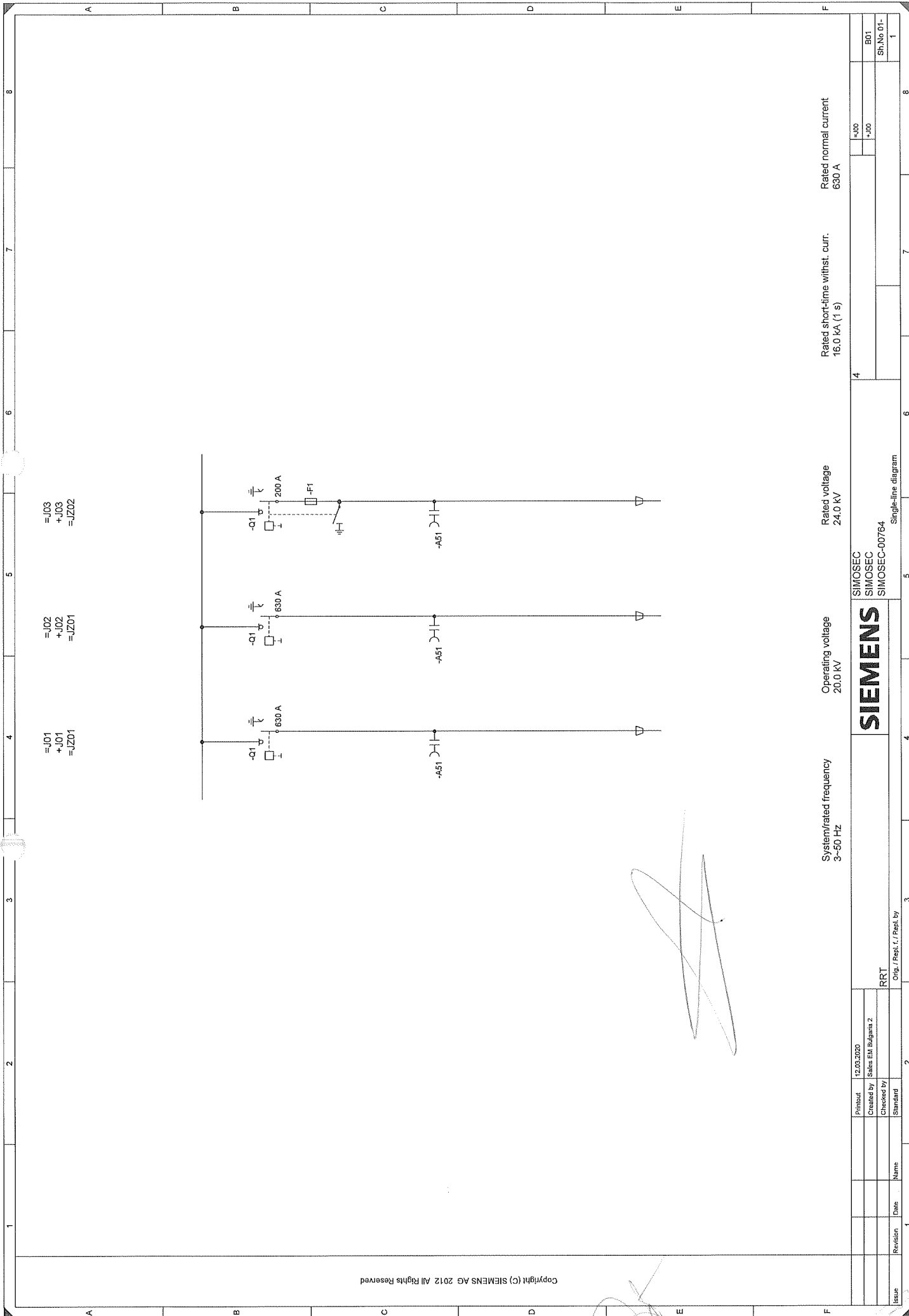
Operating voltage  
20.0 kV

Rated voltage  
24.0 kV

System/rated frequency  
3-50 Hz

SIEMENS  
SIMOSEC  
SIMOSEC-00763

Issue	Revision	Date	Name	Standard	Checked by	Created by	Printout
						Stihls EM Bulgaria 2	12.03.2020
R(T/H)							
Orig. / Rep. f. / Repl. by							
Constructional data							
SIMOSEC-00763							
3							
Rated normal current 630 A							
Rated short-time withst. curr. 16.0 kA (1 s)							
Operating voltage 20.0 kV							
Rated voltage 24.0 kV							
System/rated frequency 3-50 Hz							
SIEMENS SIMOSEC SIMOSEC-00763							
Rated normal current 630 A							
Rated short-time withst. curr. 16.0 kA (1 s)							
Operating voltage 20.0 kV							
Rated voltage 24.0 kV							
System/rated frequency 3-50 Hz							
SIEMENS SIMOSEC SIMOSEC-00763							
Rated normal current 630 A							
Rated short-time withst. curr. 16.0 kA (1 s)							
Operating voltage 20.0 kV							
Rated voltage 24.0 kV							
System/rated frequency 3-50 Hz							
SIEMENS SIMOSEC SIMOSEC-00763							
Rated normal current 630 A							
Rated short-time withst. curr. 16.0 kA (1 s)							
Operating voltage 20.0 kV							
Rated voltage 24.0 kV							
System/rated frequency 3-50 Hz							
SIEMENS SIMOSEC SIMOSEC-00763							
Rated normal current 630 A							
Rated short-time withst. curr. 16.0 kA (1 s)							
Operating voltage 20.0 kV							
Rated voltage 24.0 kV							
System/rated frequency 3-50 Hz							
SIEMENS SIMOSEC SIMOSEC-00763							
Rated normal current 630 A							
Rated short-time withst. curr. 16.0 kA (1 s)							
Operating voltage 20.0 kV							
Rated voltage 24.0 kV							
System/rated frequency 3-50 Hz							
SIEMENS SIMOSEC SIMOSEC-00763							
Rated normal current 630 A							
Rated short-time withst. curr. 16.0 kA (1 s)							
Operating voltage 20.0 kV							
Rated voltage 24.0 kV							
System/rated frequency 3-50 Hz							
SIEMENS SIMOSEC SIMOSEC-00763							
Rated normal current 630 A							
Rated short-time withst. curr. 16.0 kA (1 s)							
Operating voltage 20.0 kV							
Rated voltage 24.0 kV							
System/rated frequency 3-50 Hz							
SIEMENS SIMOSEC SIMOSEC-00763							
Rated normal current 630 A							
Rated short-time withst. curr. 16.0 kA (1 s)							
Operating voltage 20.0 kV							
Rated voltage 24.0 kV							
System/rated frequency 3-50 Hz							
SIEMENS SIMOSEC SIMOSEC-00763							
Rated normal current 630 A							
Rated short-time withst. curr. 16.0 kA (1 s)							
Operating voltage 20.0 kV							
Rated voltage 24.0 kV							
System/rated frequency 3-50 Hz							
SIEMENS SIMOSEC SIMOSEC-00763							
Rated normal current 630 A							
Rated short-time withst. curr. 16.0 kA (1 s)							
Operating voltage 20.0 kV							
Rated voltage 24.0 kV							
System/rated frequency 3-50 Hz							
SIEMENS SIMOSEC SIMOSEC-00763							
Rated normal current 630 A							
Rated short-time withst. curr. 16.0 kA (1 s)							
Operating voltage 20.0 kV							
Rated voltage 24.0 kV							
System/rated frequency 3-50 Hz							
SIEMENS SIMOSEC SIMOSEC-00763							
Rated normal current 630 A							
Rated short-time withst. curr. 16.0 kA (1 s)							
Operating voltage 20.0 kV							
Rated voltage 24.0 kV							
System/rated frequency 3-50 Hz							
SIEMENS SIMOSEC SIMOSEC-00763							
Rated normal current 630 A							
Rated short-time withst. curr. 16.0 kA (1 s)							
Operating voltage 20.0 kV							
Rated voltage 24.0 kV							
System/rated frequency 3-50 Hz							
SIEMENS SIMOSEC SIMOSEC-00763							
Rated normal current 630 A							
Rated short-time withst. curr. 16.0 kA (1 s)							
Operating voltage 20.0 kV							
Rated voltage 24.0 kV							
System/rated frequency 3-50 Hz							
SIEMENS SIMOSEC SIMOSEC-00763							
Rated normal current 630 A							
Rated short-time withst. curr. 16.0 kA (1 s)							
Operating voltage 20.0 kV							
Rated voltage 24.0 kV							
System/rated frequency 3-50 Hz							
SIEMENS SIMOSEC SIMOSEC-00763							
Rated normal current 630 A							
Rated short-time withst. curr. 16.0 kA (1 s)							
Operating voltage 20.0 kV							
Rated voltage 24.0 kV							
System/rated frequency 3-50 Hz							
SIEMENS SIMOSEC SIMOSEC-00763							
Rated normal current 630 A							
Rated short-time withst. curr. 16.0 kA (1 s)							
Operating voltage 20.0 kV							
Rated voltage 24.0 kV							
System/rated frequency 3-50 Hz							
SIEMENS SIMOSEC SIMOSEC-00763							
Rated normal current 630 A							
Rated short-time withst. curr. 16.0 kA (1 s)							
Operating voltage 20.0 kV							
Rated voltage 24.0 kV							
System/rated frequency 3-50 Hz							
SIEMENS SIMOSEC SIMOSEC-00763							
Rated normal current 630 A							
Rated short-time withst. curr. 16.0 kA (1 s)							
Operating voltage 20.0 kV							
Rated voltage 24.0 kV							
System/rated frequency 3-50 Hz							
SIEMENS SIMOSEC SIMOSEC-00763							
Rated normal current 630 A							
Rated short-time withst. curr. 16.0 kA (1 s)							
Operating voltage 20.0 kV							
Rated voltage 24.0 kV							
System/rated frequency 3-50 Hz							
SIEMENS SIMOSEC SIMOSEC-00763							
Rated normal current 630 A							
Rated short-time withst. curr. 16.0 kA (1 s)							
Operating voltage 20.0 kV							
Rated voltage 24.0 kV							
System/rated frequency 3-50 Hz							
SIEMENS SIMOSEC SIMOSEC-00763							
Rated normal current 630 A							
Rated short-time withst. curr. 16.0 kA (1 s)							
Operating voltage 20.0 kV							
Rated voltage 24.0 kV							
System/rated frequency 3-50 Hz							
SIEMENS SIMOSEC SIMOSEC-00763							
Rated normal current 630 A							
Rated short-time withst. curr. 16.0 kA (1 s)							
Operating voltage 20.0 kV							
Rated voltage 24.0 kV							
System/rated frequency 3-50 Hz							
SIEMENS SIMOSEC SIMOSEC-00763							
Rated normal current 630 A							
Rated short-time withst. curr. 16.0 kA (1 s)							
Operating voltage 20.0 kV							
Rated voltage 24.0 kV							
System/rated frequency 3-50 Hz							
SIEMENS SIMOSEC SIMOSEC-00763							
Rated normal current 630 A							
Rated short-time withst. curr. 16.0 kA (1 s)							
Operating voltage 20.0 kV							
Rated voltage 24.0 kV							
System/rated frequency 3-50 Hz							
SIEMENS SIMOSEC SIMOSEC-00763							
Rated normal current 630 A							
Rated short-time withst. curr. 16.0 kA (1 s)							
Operating voltage 20.0 kV							
Rated voltage 24.0 kV							
System/rated frequency 3-50 Hz							
SIEMENS SIMOSEC SIMOSEC-00763							
Rated normal current 630 A							
Rated short-time withst. curr. 16.0 kA (1 s)							
Operating voltage 20.0 kV							
Rated voltage 24.0 kV							
System/rated frequency 3-50 Hz							
SIEMENS SIMOSEC SIMOSEC-00763							
Rated normal current 630 A							
Rated short-time withst. curr. 16.0 kA (1 s)							
Operating voltage 20.0 kV							
Rated voltage 24.0 kV							
System/rated frequency 3-50 Hz							
SIEMENS SIMOSEC SIMOSEC-00763							
Rated normal current 630 A							
Rated short-time withst. curr. 16.0 kA (1 s)							
Operating voltage 20.0 kV							
Rated voltage 24.0 kV							
System/rated frequency 3-50 Hz							
SIEMENS SIMOSEC SIMOSEC-00763							
Rated normal current 630 A							
Rated short-time withst. curr. 16.0 kA (1 s)							
Operating voltage 20.0 kV							
Rated voltage 24.0 kV							
System/rated frequency 3-50 Hz							
SIEMENS SIMOSEC SIMOSEC-00763							
Rated normal current 630 A							
Rated short-time withst. curr. 16.0 kA (1 s)							
Operating voltage 20.0 kV							
Rated voltage 24.0 kV							
System/rated frequency 3-50 Hz							
SIEMENS SIMOSEC SIMOSEC-00763							
Rated normal current 630 A							
Rated short-time withst. curr. 16.0 kA (1 s)							
Operating voltage 20.0 kV							
Rated voltage 24.0 kV							
System/rated frequency 3-50 Hz							
SIEMENS SIMOSEC SIMOSEC-00763							
Rated normal current 630 A							
Rated short-time withst. curr. 16.0 kA (1 s)							
Operating voltage 20.0 kV							
Rated voltage 24.0 kV							
System/rated frequency 3-50 Hz							
SIEMENS SIMOSEC SIMOSEC-00763							
Rated normal current 630 A							
Rated short-time withst. curr. 16.0 kA (1 s)							
Operating voltage 20.0 kV							
Rated voltage 24.0 kV							
System/rated frequency 3-50 Hz							
SIEMENS SIMOSEC SIMOSEC-00763							
Rated normal current 630 A							
Rated short-time withst. curr. 16.0 kA (1 s)							
Operating voltage 20.0 kV							
Rated voltage 24.0 kV							
System/rated frequency 3-50 Hz							
SIEMENS SIMOSEC SIMOSEC-00763							
Rated normal current 630 A							
Rated short-time withst. curr. 16.0 kA (1 s)							
Operating voltage 20.0 kV							
Rated voltage 24.0 kV							
System/rated frequency 3-50 Hz							
SIEMENS SIMOSEC SIMOSEC-00763							
Rated normal current 630 A							
Rated short-time withst. curr. 16.0 kA (1 s)							
Operating voltage 20.0 kV							
Rated voltage 24.0 kV							
System/rated frequency 3-50 Hz							
SIEMENS SIMOSEC SIMOSEC-00763							
Rated normal current 630 A							
Rated short-time withst. curr. 16.0 kA (1 s)							
Operating voltage 20.0 kV							
Rated voltage 24.0 kV							
System/rated frequency 3-50 Hz							
SIEMENS SIMOSEC SIMOSEC-00763							
Rated normal current 630 A							
Rated short-time withst. curr. 16.0 kA (1 s)							
Operating voltage 20.0 kV							
Rated voltage 24.0 kV							
System/rated frequency 3-50 Hz							
SIEMENS SIMOSEC SIMOSEC-00763							
Rated normal current 630 A							
Rated short-time withst. curr. 16.0 kA (1 s)							
Operating voltage 20.0 kV							
Rated voltage 24.0 kV							
System/rated frequency 3-50 Hz							
SIEMENS SIMOSEC SIMOSEC-00763							
Rated normal current 630 A							
Rated short-time withst. curr. 16.0 kA (1 s)							
Operating voltage 20.0 kV							
Rated voltage 24.0 kV							
System/rated frequency 3-50 Hz							
SIEMENS SIMOSEC SIMOSEC-00763							
Rated normal current 630 A							
Rated short-time withst. curr. 16.0 kA (1 s)							
Operating voltage 20.0 kV							
Rated voltage 24.0 kV							
System/rated frequency 3-50 Hz							
SIEMENS SIMOSEC SIMOSEC-00763							
Rated normal current 630 A							
Rated short-time withst. curr. 16.0 kA (1 s)							
Operating voltage 20.0 kV							
Rated voltage 24.0 kV							
System/rated frequency 3-50 Hz							
SIEMENS SIMOSEC SIMOSEC-00763							
Rated normal current 630 A							
Rated short-time withst. curr. 16.0 kA (1 s)							
Operating voltage 20.0 kV							
Rated voltage 24.0 kV							
System/rated frequency 3-50 Hz							
SIEMENS SIMOSEC SIMOSEC-00763							
Rated normal current 630 A							
Rated short-time withst. curr. 16.0 kA (1 s)							
Operating voltage 20.0 kV							
Rated voltage 24.0 kV							
System/rated frequency 3-50 Hz							
SIEMENS SIMOSEC SIMOSEC-00763							
Rated normal current 630 A							
Rated short-time withst. curr. 16.0 kA (1 s)							
Operating voltage 20.0 kV							
Rated voltage 24.0 kV							
System/rated frequency 3-50 Hz							
SIEMENS SIMOSEC SIMOSEC-00763							
Rated normal current 630 A							
Rated short-time withst. curr. 16.0 kA (1 s)							
Operating voltage 20.0 kV							
Rated voltage 24.0 kV							
System/rated frequency 3-50 Hz							
SIEMENS SIMOSEC SIMOSEC-00763							
Rated normal current 630 A							



Copyright (C) SIEMENS AG 2012 All Rights Reserved

=J01  
+J01  
=JZ01

=J02  
+J02  
=JZ01

=J03  
+J03  
=JZ02

System/rated frequency 3-50 Hz      Operating voltage 20.0 kV      Rated voltage 24.0 kV      Rated short-time withst. curr. 16.0 kA (1 s)      Rated normal current 630 A

SIMOSEC  
SIMOSEC  
SIMOSEC-00764

**SIEMENS**

Single-line diagram

4      5      6      7      8

Printed 12.03.2020  
Created by Sales EM Bulgaria 2  
Checked by  
Standard

RRT  
Orig./ Repl. / Repl. by

B01  
Sh.No 01-

1

8

4

1

1

1

1

1

1

1

1

1

1

1

1

1

1

1

1

1

1

1

1

1

1

1

1

1

1

1

1

1

1

1

1

1

1

1

1

1

1

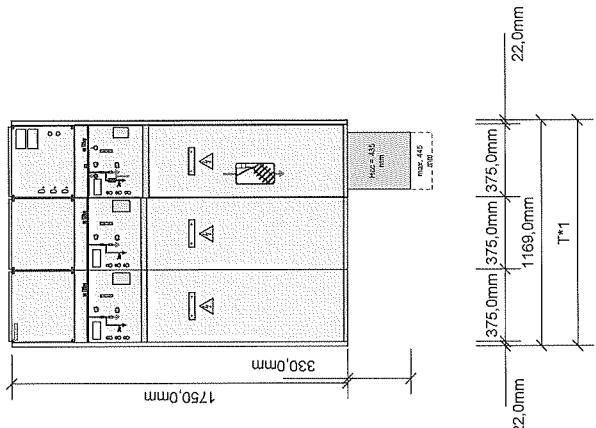
1

1

1

FRONT VIEW

- =J01 =J02 =J03 =JZ01 =JZ02
- =J01 =J02 =J03 =JZ01 =JZ02



**LOAD DATA AND MINIMUM DISTANCES**

<b>1. PERMANENT LOADS</b>	<b>MINIMUM DOORS OPENINGS:</b>
HEIGHT: 2.0 mN	Switchgear height: 1750 mm
WIDTH: 3.75 mN	Switchgear without low-voltage compartment, without front covers: 2000 mm
DEPTH: 500 mm	Switchgear height: 2100 mm:
WEIGHT: 8.75 mN	switchgear with low-voltage compartment: 350 mm:
DEPTH: 1000 mm	HEIGHT: 2300 mm
<b>2. NON PERMANENT LOADS</b>	Switchgear height: 2300 mm:
LIVE LOAD <sup>a)</sup> :	switchgear with low-voltage compartment: 550 mm:
6 kN/m <sup>2</sup>	HEIGHT: 2400 mm
<b>3. MINIMUM DISTANCES</b>	WIDTH: 1000 / 1250 / 1500 mm
WALL DISTANCE ON THE LEFT: 100 mm *1)	6. Depth of cable basement
WALL DISTANCE ON THE RIGHT: 100 mm *2)	(depends on design of delivery switchgear)
WALL DISTANCE ON THE LEFT: 650 mm *3)	*1) *2) *3) *4)
WALL DISTANCE ON THE RIGHT: 650 mm *3)	Phase note: Bending radius of cable
*3) WALL DISTANCE REAR (with rear duct): ≥ 35 mm	XX— Level of installation (altitude)
<b>4. CEILING HEIGHT</b>	≥ 2400 mm

- Control aisle:**
- \*1) Depending on national requirements, for extension/panel replacement, a control aisle is recommended of at least: 1000 mm
  - \*2) For wall-standing arrangement a lateral wall distance (left or right) is recommended of at least: 100 mm
  - \*3) Position of cable fixing (cable brackets), underneath the panel, in the cable basement: max. 600 mm (445+60)
  - \*4) Deep floor cover, for cable basement, additionally extendable downwards at site max. 600 mm
- For installation "on site" (Delivery in by-packs kit)**
- Hcc = Additional available length for installation below the panel: 2100 mm
- For switchgear design with IAC 21 kA: the height of the switchgear will be at least:

Note for installation: Acc. to delivery version of transport units, TU groups (TU's or panels) will be assembled on site

Operating voltage 20.0 kV  
 Rated voltage 24.0 kV  
 Rated short-time withst. curr. 16.0 kA (1 s)  
 Rated normal current 630 A

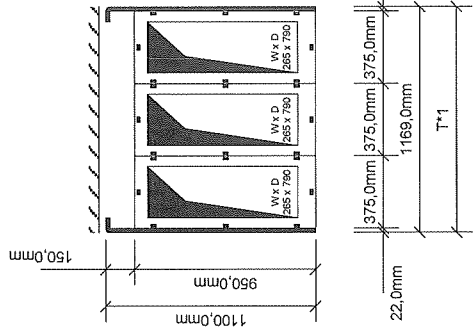
System/rated frequency 3-50 HZ

THE LOCATION AND DETAIL DIMENSIONS DO NOT SHOW THE ACTUAL SCORE OF SUPPLY.

Revision	Date	Name	Printed	12.03.2020	Created by	Sales EM Bulgaria 2
			Checked by			
			Standard			
			RRT			
			Orig. / Repl. f. / Repl. by			
			4			
			SIEMSEC			
			SIEMSEC			
			SIEMSEC-00764			
			Arrangement diagram			
			4			
			=J00			
			+J00			
			B01			
			Sh.No 01-			
			1			

PLAN VIEW

- =J01 =J02 =J03
- =J01 +J02 +J03
- =JZ01 =JZ01 =JZ02



Copyright (C) SIEMENS AG 2012 All Rights Reserved

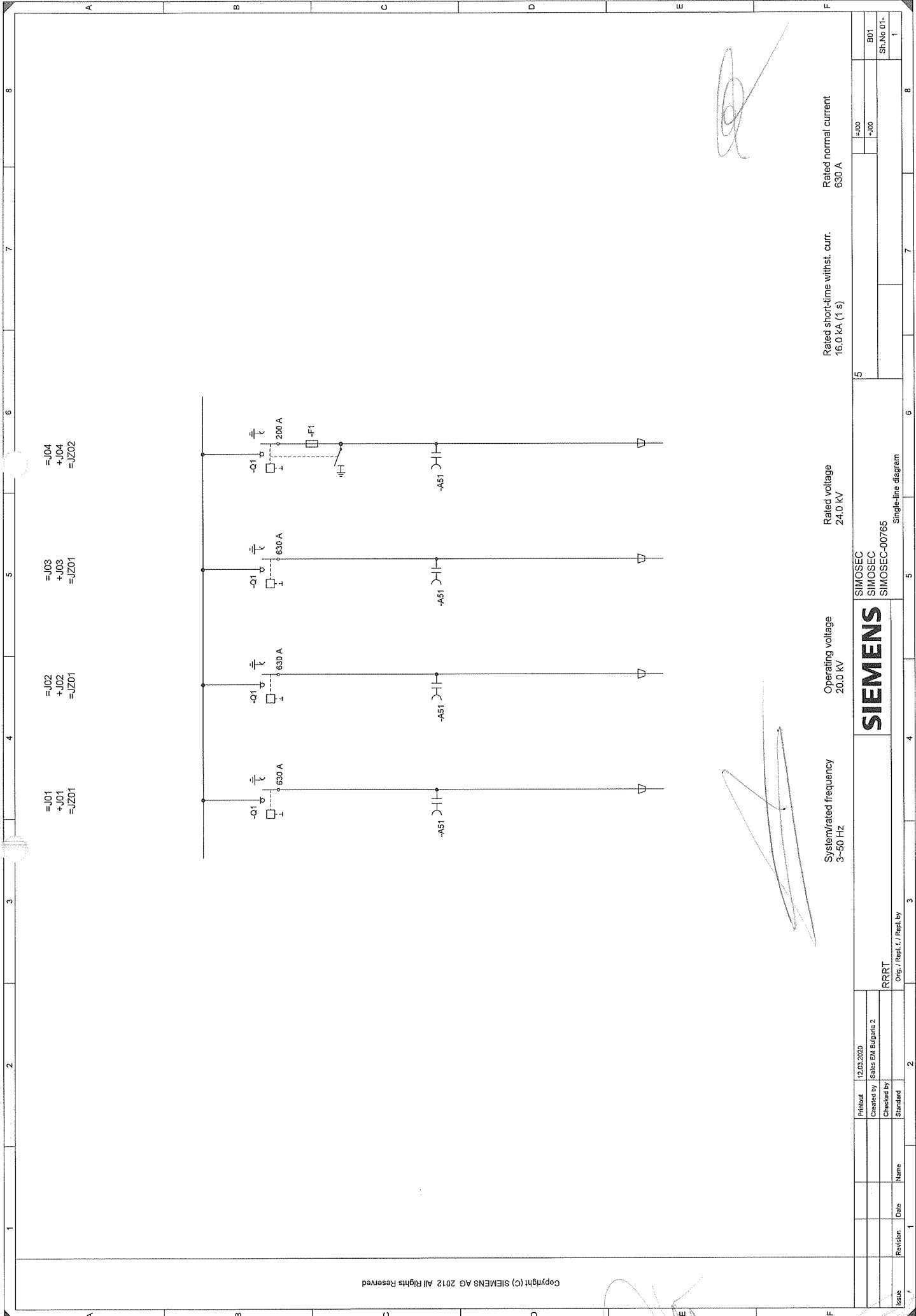
**LOAD DATA AND MINIMUM DISTANCES**

- PERMANENT LOADS**  
VERTICAL SINGLE LOAD  $Q_v$   
PANEL WIDTH:  
375 mm  
475 mm  
575 mm  
1000 mm
- NON PERMANENT LOADS**  
LIVE LOAD  $Q_n$   
6 kN/m<sup>2</sup>
- MINIMUM DISTANCES**  
WALL DISTANCE ON THE LEFT  
100 mm (2)  
100 mm (2)  
WALL DISTANCE ON THE RIGHT  
100 mm (2)  
WALL DISTANCE REAR (with rear duct)  
≥ 35 mm  
"a" WALL DISTANCE REAR (with rear duct)  
≥ 2400 mm
- MINIMUM DOOR OPENINGS:**  
switchgear height: 1750 mm;  
HEIGHT  
2000 mm  
1000 / 1250 / 1500 mm  
switchgear height: 2100 mm;  
HEIGHT  
2300 mm  
1000 / 1250 / 1500 mm  
switchgear height: 2300 mm;  
HEIGHT  
2400 mm  
1000 / 1250 / 1500 mm  
switchgear with low-voltage compartment 650 mm;  
HEIGHT  
600 mm (2)  
600 mm (2)  
600 mm (2)  
≥ 35 mm  
≥ 2400 mm
- DEPTH OF CABLE BASEMENT**  
(depends on design of delivery switchgear)  
"3"-4)  
Please note: Bending radius of cable  
≥ 35 mm  
≥ 2400 mm

**Control aisle:**  
Depending on national requirements, for extension/panel replacement, a control aisle is recommended of at least:  
1) For free-standing arrangement a lateral wall distance (left or right) is recommended of at least: 1000 mm  
2) For free-standing arrangement a lateral wall distance (left or right) is recommended of at least: 100 mm  
For wall-standing or free-standing arrangement with panel type "CC" at end of the switchgear (arranged on the left or right side): 600 mm  
3) Position of cable fixing (cable bracket), underneath the panel, in the cable basement max. 500 mm (445+60)  
4) Deep floor cover, for cable basement, additionally extendable downwards at site max. 600 mm  
Position of cable along (cable bracket), underneath the panel, in the cable basement  
"3"-4)  
For installation "on site"  
(Delivery in by-stack kit)  
Hcc = Additional available length for installation below the panel  
For switchgear design with IAC 21 kA: the height of the switchgear will be at least: 2100 mm

**FLOOR OPENING (foundation opening) in mm:**  
Width x Depth:  
Details see "W x D" by panel floor plan

Rated voltage 24.0 kV		Rated short-time withst. curr. 16.0 kA (1 s)		Rated normal current 630 A	
Operating voltage 20.0 kV		System/rated frequency 3~50 Hz		Constructional data	
SIEMENS		SIEMSEC		SIEMSEC-00764	
RRT		RRT		RRT	
12.03.2020		12.03.2020		12.03.2020	
Created by Siles EM Bulgaria 2		Created by Siles EM Bulgaria 2		Created by Siles EM Bulgaria 2	
Checked by		Checked by		Checked by	
Standard		Standard		Standard	
Revision		Revision		Revision	
Date		Date		Date	
Name		Name		Name	
Origi. / Repl. f. / Repl. by		Origi. / Repl. f. / Repl. by		Origi. / Repl. f. / Repl. by	
1		2		3	
4		5		6	
7		8		9	
10		11		12	
13		14		15	
16		17		18	
19		20		21	
22		23		24	
25		26		27	
28		29		30	
31		32		33	
34		35		36	
37		38		39	
40		41		42	
43		44		45	
46		47		48	
49		50		51	
52		53		54	
55		56		57	
58		59		60	
61		62		63	
64		65		66	
67		68		69	
70		71		72	
73		74		75	
76		77		78	
79		80		81	
82		83		84	
85		86		87	
88		89		90	
91		92		93	
94		95		96	
97		98		99	
100		101		102	
103		104		105	
106		107		108	
109		110		111	
112		113		114	
115		116		117	
118		119		120	
121		122		123	
124		125		126	
127		128		129	
130		131		132	
133		134		135	
136		137		138	
139		140		141	
142		143		144	
145		146		147	
148		149		150	
151		152		153	
154		155		156	
157		158		159	
160		161		162	
163		164		165	
166		167		168	
169		170		171	
172		173		174	
175		176		177	
178		179		180	
181		182		183	
184		185		186	
187		188		189	
190		191		192	
193		194		195	
196		197		198	
199		200		201	
202		203		204	
205		206		207	
208		209		210	
211		212		213	
214		215		216	
217		218		219	
220		221		222	
223		224		225	
226		227		228	
229		230		231	
232		233		234	
235		236		237	
238		239		240	
241		242		243	
244		245		246	
247		248		249	
250		251		252	
253		254		255	
256		257		258	
259		260		261	
262		263		264	
265		266		267	
268		269		270	
271		272		273	
274		275		276	
277		278		279	
280		281		282	
283		284		285	
286		287		288	
289		290		291	
292		293		294	
295		296		297	
298		299		300	
301		302		303	
304		305		306	
307		308		309	
310		311		312	
313		314		315	
316		317		318	
319		320		321	
322		323		324	
325		326		327	
328		329		330	
331		332		333	
334		335		336	
337		338		339	
340		341		342	
343		344		345	
346		347		348	
349		350		351	
352		353		354	
355		356		357	
358		359		360	
361		362		363	
364		365		366	
367		368		369	
370		371		372	
373		374		375	
376		377		378	
379		380		381	
382		383		384	
385		386		387	
388		389		390	
391		392		393	
394		395		396	
397		398		399	
400		401		402	
403		404		405	
406		407		408	
409		410		411	
412		413		414	
415		416		417	
418		419		420	
421		422		423	
424		425		426	
427		428		429	
430		431		432	
433		434		435	
436		437		438	
439		440		441	
442		443		444	
445		446		447	
448		449		450	
451		452		453	
454		455		456	
457		458		459	
460		461		462	
463		464		465	
466		467		468	
469		470		471	
472		473		474	
475		476		477	
478		479		480	
481		482		483	
484		485		486	
487		488		489	
490		491		492	
493		494		495	
496		497		498	
499		500		501	
502		503		504	
505		506		507	
508		509		510	
511		512		513	
514		515		516	
517		518		519	
520		521		522	
523		524		525	
526		527		528	
529		530		531	
532		533		534	
535		536		537	
538		539		540	
541		542		543	
544		545		546	
547		548		549	
550		551		552	
553		554		555	
556		557		558	
559		560		561	
562		563		564	
565		566		567	
568		569		570	
571		572		573	
574		575		576	
577		578		579	
580		581		582	
583		584		585	
586		587		588	
589		590		591	
592		593		594	
595		596		597	
598		599		600	
601		602		603	
604		605		606	
607		608		609	
610		611		612	
613		614		615	
616		617		618	
619		620		621	
622		623		624	
625		626		627	
628		629		630	
631		632		633	
634		635		636	
637		638		639	
640		641		642	
643		644		645	
646		647		648	
649		650		651	
652		653		654	
655		656		657	
658		659		660	
661		662		663	
664		665		666	
667		668		669	
670		671		672	
673		674		675	
676		677		678	
679		680		681	
682		683		684	
685		686		687	
688		689		690	
691		692		693	
694		695		696	
697		698		699	
700		701		702	
703		704		705	
706		707		708	
709		710		711	
712		713		714	
715		716		717	
718		719		720	
721		722		723	
724		725		726	
727		728		729	
730		731		732	
733		734		735	



=J01  
 +J01  
 =JZ01  
  
 =J02  
 +J02  
 =JZ01  
  
 =J03  
 +J03  
 =JZ01  
  
 =J04  
 +J04  
 =JZ02

System/rated frequency 3-50 Hz  
 Operating voltage 20.0 kV  
 Rated voltage 24.0 kV  
 Rated short-time withst. curr. 16.0 kA (1 s)  
 Rated normal current 630 A

Printed		12.03.2020		RRRT		5		8	
Created by		Sales EM Bulgaria 2		RRRT		5		8	
Checked by				Orig./ Repl. f./ Repl. by		5		8	
Standard						5		8	
Issue		Revision		Name		Date		1	
		2						1	
								B01	
								Sh.No 01-	
								1	

**SIEMENS**  
 SIMOSEC  
 SIMOSEC-00765  
 Single-line diagram



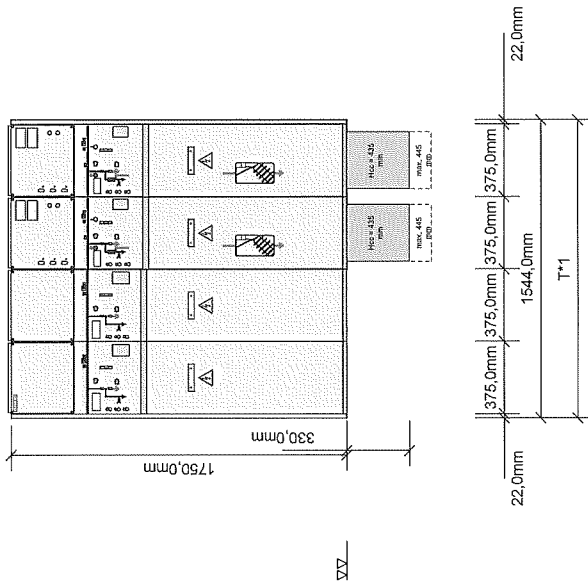






FRONT VIEW

- =J01 =J02 =J03 =J04
- =JZ01 =JZ01 =JZ02 =JZ02



**LOAD DATA AND MINIMUM DISTANCES**

- PERMANENT LOADS**
  - VERTICAL SINGLE LOAD G<sub>v</sub>
  - PANEL WIDTH:
  - 2.0 kN
  - 3.75 kN
  - 4.5 kN
  - 5.0 kN
  - 5.0 kN
  - 1000 mm
- NON PERMANENT LOADS**
  - LIVE LOAD G<sub>v</sub>
  - 6 kN/m<sup>2</sup>
- MINIMUM DISTANCES**
  - MINIMUM DISTANCES TO THE WALL DISTANCE ON THE LEFT
  - MINIMUM DISTANCES TO THE WALL DISTANCE ON THE RIGHT
  - WALL DISTANCE FOR PANEL TYPE "CC":
  - WALL DISTANCE LEFT
  - WALL DISTANCE RIGHT
  - \*n WALL DISTANCE REAR (with rear duct)
  - CEILING HEIGHT
  - ≥ 2400 mm

**5. MINIMUM DOOR OPENING:**  
Switchgear height 1750 mm  
HEIGHT  
2000 mm  
1000 / 1250 / 1500 mm  
Switchgear height 2100 mm  
HEIGHT  
2300 mm  
1000 / 1250 / 1500 mm  
Switchgear height 2300 mm  
HEIGHT  
2400 mm  
1000 / 1250 / 1500 mm  
WIDTH  
≥ 600 mm  
(depends on design of delivery switchgear)  
\*3) \*4)  
Please note: Bending radius of cable  
≥ 35 mm  
\*n Level of installation (altitude)

Control aisle:  
 \*1) Depending on national requirements, for extension/panel replacement, a control aisle is recommended of at least:  
 1000 mm  
 100 mm  
 100 mm  
 600 mm  
 max. 600 mm  
 \*2) For wall-standing arrangement a lateral wall distance (left or right) is recommended of at least:  
 100 mm  
 100 mm  
 For wall-standing or free-standing arrangement with panel type „CC“ at end of the switchgear (arranged on the left or right side):  
 max. 600 mm (445-48)  
 \*3) Position of cable fixing (cable brackets), underneath the panel, in the cable basement.  
 Position of cable fixing (cable brackets), additionally extensible downwards at site  
 max. 600 mm  
 \*3) \*4) For installation "on site"  
 (Delivery in by-pack kit)  
 Hic = Additional available length for installation below the panel  
 2100 mm  
 For switchgear design with IAC 21 kA, the height of the switchgear will be at least:

Note for installation: Acc. to delivery version of transport units, TU groups (TU's or panels) will be assembled on site.

Rated short-time withst. curr. 16.0 kA (1 s)  
 Rated normal current 630 A

Operating voltage 20.0 kV  
 Rated voltage 24.0 kV

System/rated frequency 3-50 Hz

THE LOCATION AND DETAIL DIMENSIONS DO HAVE SYMBOLIC CHARACTER AND DO NOT SHOW THE ACTUAL SCOPE OF SUPPLY.

**SIEMENS**

SIMOSEC  
SIMOSEC  
SIMOSEC-00766

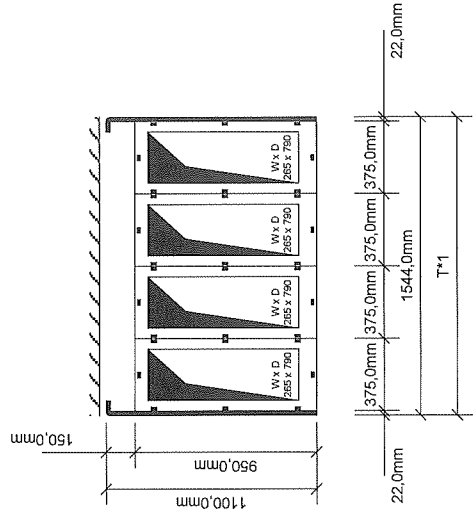
Arrangement diagram

Revision	Date	Name	Standard	Checked by	Created by	Printout	12.03.2020
							Sales EM Bulgaria 2
							RRTT
							Orig./ Repl./ L/ Repl. by

Issue	1	Date		Name		Standard		Checked by		Created by		Printout	
-------	---	------	--	------	--	----------	--	------------	--	------------	--	----------	--

PLAN VIEW

- =J01 =J02 =J03 =J04
- +J01 +J02 +J03 +J04
- =JZ01 =JZ01 =JZ02 =JZ02



**LOAD DATA AND MINIMUM DISTANCES**

<b>1. PERMANENT LOADS</b>	<b>MINIMUM DOOR OPENINGS:</b>
VERTICAL SINGLE LOAD G <sub>v</sub>	switchgear height: 1750 mm
PANEL WIDTH:	HEIGHT
375 mm	2000 mm
475 mm	1000 / 1250 / 1500 mm
4.5 kN	switchgear height: 2100 mm:
5.0 kN	HEIGHT
1000 mm	switchgear with low-voltage compartment: 350 mm:
	HEIGHT
	switchgear height: 2300 mm:
	HEIGHT
	switchgear with low-voltage compartment: 550 mm:
	HEIGHT
	HEIGHT
	WIDTH
	6. Depth of cable basement
	(depends on design of delivery switchgear)
	-3) *4)
	Please note: Bending radius of cable
	≥ 35 mm
	XX... Level of installation (altitude)
	≥ 2400 mm

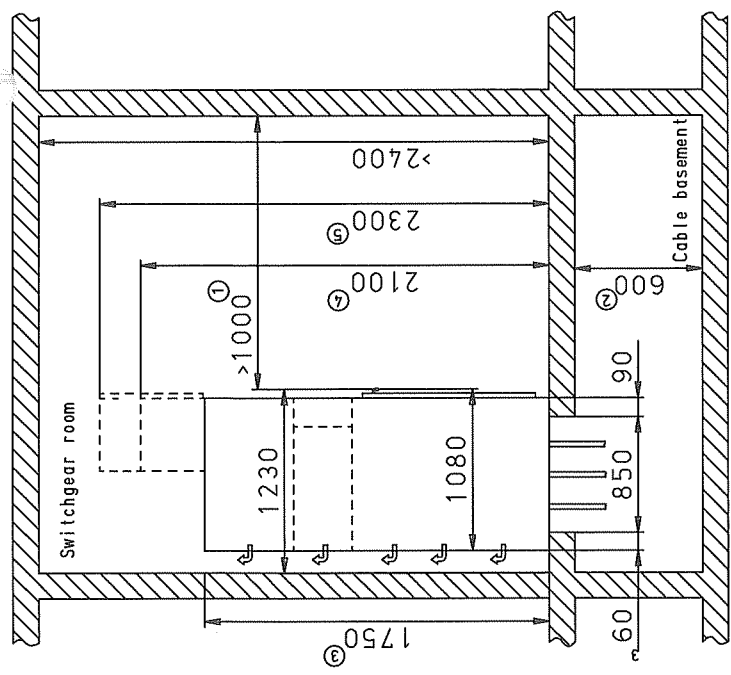
**Control aisle:**

- \*1) Depending on national requirements, for extension/panel replacement, a control aisle is recommended of at least 1000 mm for switchgear, a control aisle ≥ 1000 mm.
- \*2) For free-standing arrangement a lateral wall distance (left or right) is recommended of at least: 100 mm. For wall-standing or free-standing arrangement with panel type "CC" at end of the switchgear (arranged on the left or right side): 600 mm.
- \*3) Position of cable fixing (cable bracket), underneath the panel, in the cable basement. Position of cable fixing (cable bracket), underneath the panel, in the cable basement max. 500 mm (445+60).
- \*4) Deep floor cover, for cable basement, additionally extendable downwards at site max. 600 mm.
- \*3) \*4) For installation "on site" (Delivery in by-space kit) Hcc = Additional available length for installation below the panel. For switchgear design with IAC 21 kA, the height of the switchgear will be at least: 2100 mm.

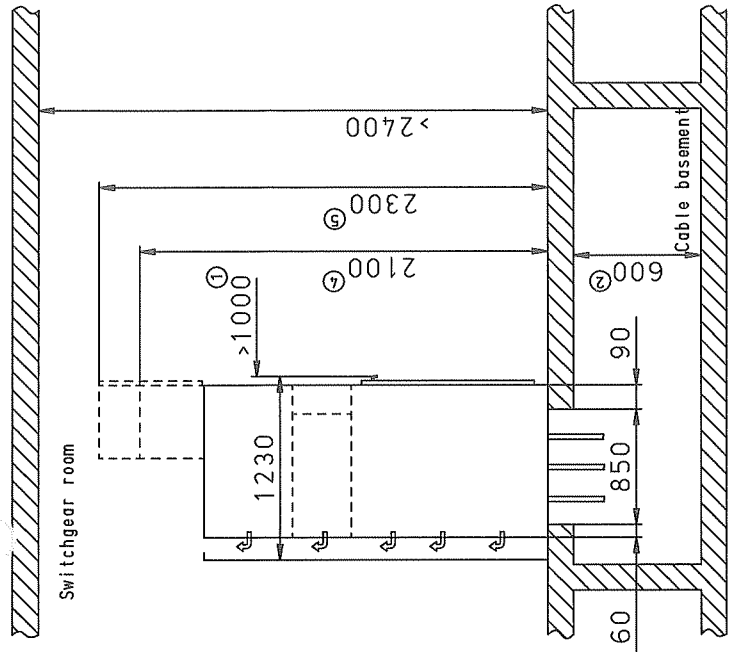
FLOOR OPENING (foundation opening) in mm:  
Width x Depth:  
Details see "W x D" by panel floor plan

Rated normal current 630 A		Rated short-time withst. curr. 16.0 kA (1 s)	
Operating voltage 20.0 kV		Rated voltage 24.0 kV	
System/rated frequency 3-50 Hz		SIEMSEC SIEMSEC SIEMSEC-00786	
12.03.2020		6	
Printed by Sales EM Bulgaria 2		B01	
Created by		Sh.No 01-	
Checked by		1	
Standard		8	
Name		6	
Date		7	
Revision		5	
Original / Repl. f. / Repl. by		8	
RRIT		Constructional data	

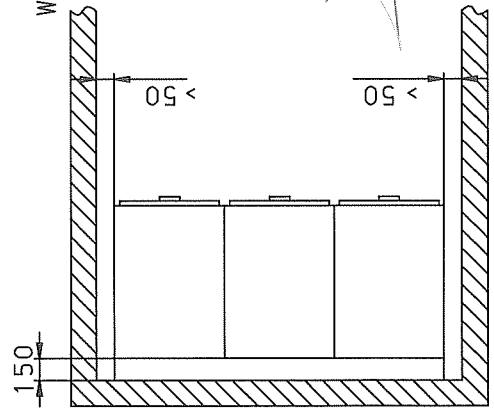
Als Betriebsgeheimnis anvertraut. Alle Rechte vorbehalten. Proprietary data, company confidential. All rights reserved. Confidant como secreto industrial. Nos reservamos todos los derechos. Comunitàdo como segredo empresarial. Reservados todos os direitos. Contitè a titre de secret d'entreprise. Tous droits réservés.



Wall mounted installation



Free standing installation



- ① Floor width > 1000mm
- ② Dependent on bending radius of cable
- ③ Panel height 1750mm (standard)
- ④ Optional: panel height 2100mm with low voltage compartment 350mm
- ⑤ Optional: panel height 2300mm with low voltage compartment 550mm

Tolerance Toleranz (ISO)		Material: Werkstoff		Date Name		Designation		ISO-Projection	
DIN ISO 2768 medium		-		CHIME		13-12-2001		Room layout SIMOSEC Standard	
Location 1 : Standort 1		Location 2 : Standort 2		Date Datum		Department Abteilung		Page Blatt	
-		-		22-01-2001		PTD MZ PR3		1-	
-		-		Name Name		Standard		Itemnumber	
-		-		01		FFMFB		Sechnummer	
-		-		Change-Number		SIEMENS		832-5039.9	
-		-		Revision		-		-	
-		-		Revisión		-		-	
-		-		Revisión		-		-	

<b>SIEMENS</b>			
Тип: SIMOSEC R			
Сериен No: FDJ 3004738180-020000/007		Година на производство: 11-2019	
IEC: 62271-1/-102/-103-200			
U <sub>n</sub> = 24 kV	U <sub>h</sub> = 125 kV	U <sub>g</sub> = 50 kV	f = 50 Hz
I <sub>max</sub> = I <sub>h</sub> = 40 kA I <sub>h</sub> = 16 kA I <sub>h</sub> /I <sub>h</sub> = 1/1 s		U - a.c. = 38 kV	
шина система I <sub>h</sub> = 630 A		U - d.c. = 72 kV	
LSC2			
<b>Извод Вход / Изход</b>			
↔ M1(n=1000) E2, C2		↔ M0(n=1000)	
↔ M0(n=1000) E2			
I <sub>h</sub> = 630 A		U <sub>h</sub> = AC 230V	
<b>Херметично затворена система под налягане</b>			
Работно налягане p <sub>раб</sub>		140 kPa/20°C (абсолютно)	
Мин. налягане p <sub>min</sub> = p <sub>min</sub> = p <sub>min</sub>		120 kPa/20°C (абсолютно)	
Доп. околна температура TC		-5/55°C	
Количество SF <sub>6</sub> m		0,4 kg	
Инструкции		824-6080-9	
SIEMENS		MADE IN BULGARIA	
		63498820 000	

<b>SIEMENS</b>			
Тип: SIMOSEC T			
Сериен No: FDJ 3004738180-006000/007		Година на производство: 01-2020	
IEC: 62271-1/-102/-103-105-200			
U <sub>n</sub> = 24 kV	U <sub>h</sub> = 125 kV	U <sub>g</sub> = 50 kV	f = 50 Hz
I <sub>max</sub> = I <sub>h</sub> = 40 kA I <sub>h</sub> = 16 kA I <sub>h</sub> /I <sub>h</sub> = 1/1 s		U - a.c. = 38 kV	
шина система I <sub>h</sub> = 630 A		U - d.c. = 72 kV	
LSC2			
<b>Трансформаторен извод</b>			
↔ M1(n=1000) E2, C2		↔ M0(n=1000)	
↔ M0(n=1000) E2		I <sub>h</sub> = 5 kA	
I <sub>h</sub> = 200 A*		U <sub>h</sub> = AC 230V	
* номинален ток на предпазителя във инструкцията			
<b>Херметично затворена система под налягане</b>			
Работно налягане p <sub>раб</sub>		140 kPa/20°C (абсолютно)	
Мин. налягане p <sub>min</sub> = p <sub>min</sub> = p <sub>min</sub>		120 kPa/20°C (абсолютно)	
Доп. околна температура TC		-5/55°C	
Количество SF <sub>6</sub> m		0,4 kg	
Инструкции		834-6080-9	
SIEMENS		MADE IN BULGARIA	
		63498810 000	